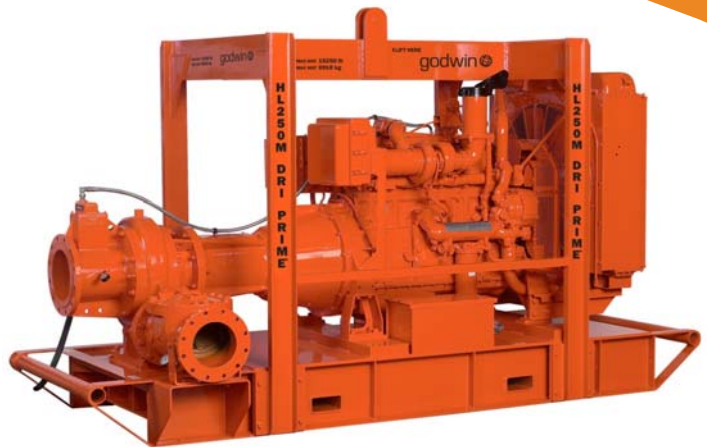


# HL250M Dri-Prime® Pump

The Godwin Dri-Prime HL250M pump offers flow rates to 5390 USGPM and has the capability of discharge pressures to 175 psi.

The HL250M is able to automatically prime to 28' of suction lift from dry. Automatic or manual starting/stopping available through integral mounted control panel or optional wireless-remote access.

High discharge pressure, dry-running, and portability make the HL250M the perfect choice for mining, industrial and emergency fire backup applications.



## Features and Benefits

- Simple maintenance normally limited to checking fluid levels and filters.
- Dri-Prime (continuously operated Venturi air ejector priming device) requiring no periodic adjustment or control. Optional automatic on-off control available on the priming system.
- Dry-running high pressure liquid bath mechanical seal with high abrasion resistant solid silicon carbide faces.
- Close-coupled centrifugal pump with Dri-Prime system coupled to a diesel engine or electric motor.
- All cast iron construction (stainless steel construction option available) with cast steel impeller.
- Also available in a critically silenced unit which reduces noise levels to less than 70dBA at 30'.
- Standard engine Caterpillar C15 (T3 Flex). Also available with Caterpillar C15 (IT4).

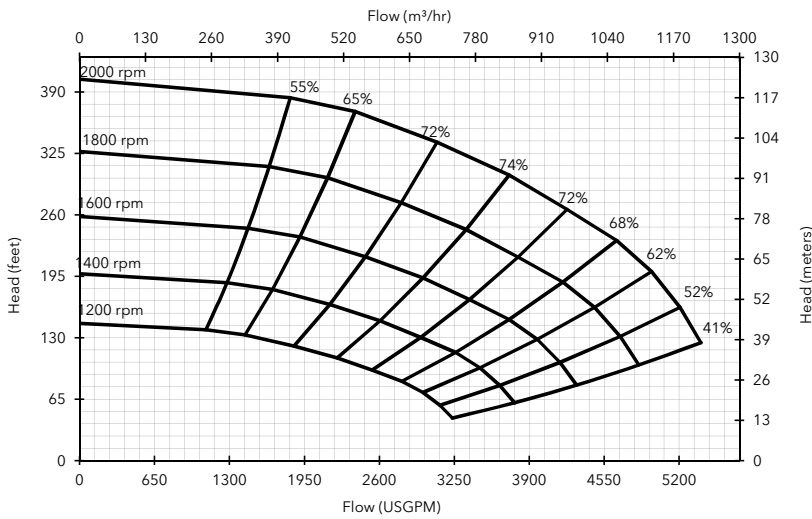
## Specifications

Suction connection	12" 150# ANSI B16.5
Delivery connection	10" 150# ANSI B16.5
Max capacity	5390 USGPM †
Max solids handling	2.6"
Max Impeller diameter	17.3"
Max operating temp	176°F*
Max working pressure	175 psi
Max suction pressure	87 psi
Max casing pressure	263 psi
Max operating speed	2000 rpm

\* Please contact our office for applications in excess of 176°F.

† Larger diameter pipes may be required for maximum flows.

## Performance Curve



## Engine option 1

Caterpillar C15 (T3 Flex), 475 HP @ 2000 rpm

Impeller diameter 17.3"

Pump speed 2000 rpm

### Suction Lift Table

Total Suction Head (feet)	Total Delivery Head (feet)				
	125	174	249	315	374
	Output (USGPM)				
10	5349	5063	4293	3346	1981
15	5283	5029	4183	3302	1651
20	4843	4623	4191	3170	1453
25	3853	3742	3522	3009	-

Fuel capacity: 240 US Gal

Max Fuel consumption @ 2000 rpm: 24.4 US Gal/hr

Max Fuel consumption @ 1800 rpm: 23.7 US Gal/hr

Weight (Dry): 12,230 lbs

Weight (Wet): 14,030 lbs

Dimensions: (L) 162" x (W) 70" x (H) 95"

Performance data provided in tables is based on water tests at sea level and 20°C ambient. All information is approximate and for general guidance only. Please contact the factory or office for further details.

## Materials

Pump casing & suction cover	Cast iron BS EN 1561 - 1997
Wearplates	Cast Iron Chrome 1.0/1.5% Nickel 2%
Pump Shaft	Carbon steel BS 970 - 1991 817M40T
Impeller	Cast Steel BS3100 A5 Hardness to 200 HB Brinell
Non-return valve body	Cast Iron
Mechanical seal	Silicon carbide face; Viton elastomers; Stainless steel body

## Engine option 2

Caterpillar C15 (IT4), 475 HP @ 2000 rpm

Impeller diameter 17.3"

Pump speed 2000 rpm

### Suction Lift Table

Total Suction Head (feet)	Total Delivery Head (feet)				
	125	174	249	315	374
	Output (USGPM)				
10	5349	5063	4293	3346	1981
15	5283	5029	4183	3302	1651
20	4843	4623	4191	3170	1453
25	3853	3742	3522	3009	-

Fuel capacity: 240 US Gal

Max Fuel consumption @ 2000 rpm: 24.4 US Gal/hr

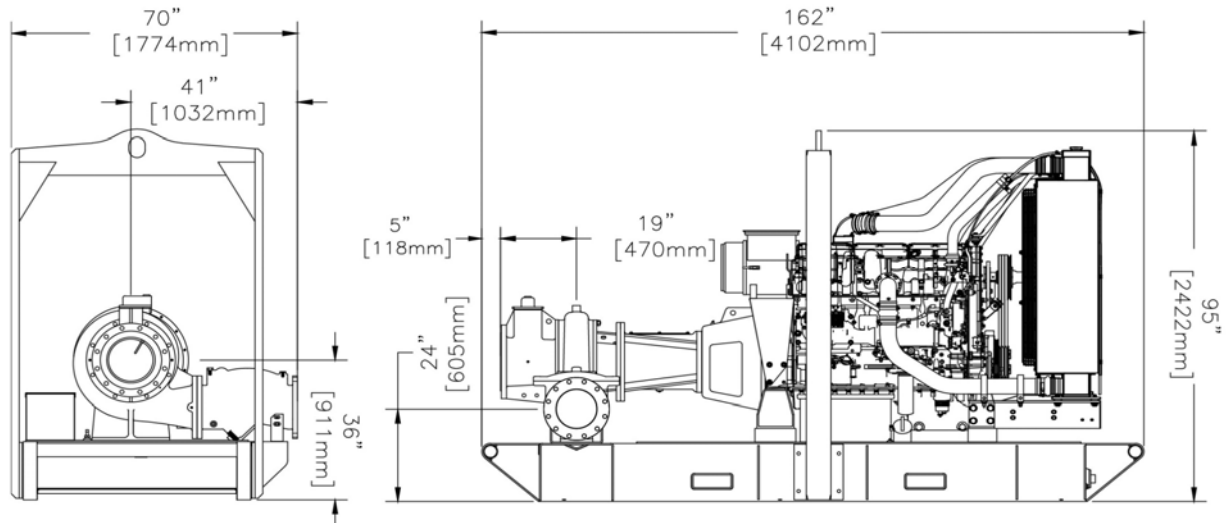
Max Fuel consumption @ 1800 rpm: 23.7 US Gal/hr

Weight (Dry): 13,230 lbs

Weight (Wet): 15,030 lbs

Dimensions: (L) 162" x (W) 70" x (H) 109"

Performance data provided in tables is based on water tests at sea level and 20°C ambient. All information is approximate and for general guidance only. Please contact the factory or office for further details.



84 Floodgate Road  
Bridgeport, NJ 08014 USA  
(856) 467-3636 . Fax (856) 467-4841  
Email: sales@godwinpumps.com

Reference number : 95-1114-3000  
Date of issue : February 26, 2014  
Issue : 3

[www.godwinpumps.com](http://www.godwinpumps.com)